



Hands are for holding and helping, not for hurting.

Abuse hurts everyone.

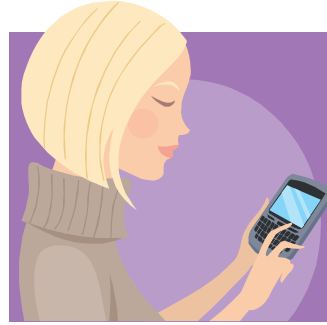
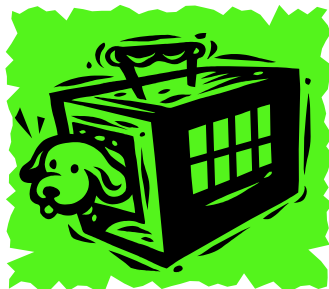
Please report suspected abuse.



Animal Abuse IS Family Violence.

In a home that hurts, no one is safe.

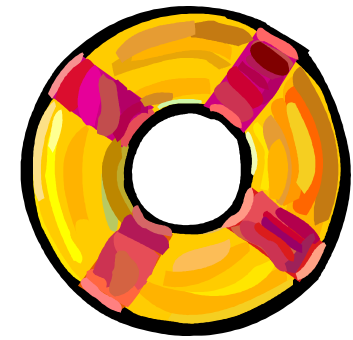
Please report suspected abuse.



Suspect Abuse?

You don't have to fix it – **just call.**

You could save a life.



If you THINK your friend, a child, an elder, or an animal is being abused,

You may be right.

Make a call.

You could save a life.

Partner Violence: 1-800-644-1441

Child Abuse: 1-800-922-5330

Elder Abuse: 1-800-922-5330 in a health care facility 1-800-842-0078

Animal Abuse: Easton, Linwood, and Leavenworth County 913-682-5724
Basehor 913-724-1370
Lansing 913-727-3000
Leavenworth 913-682-0268 or 682-4411 Tonganoxie 913-845-2311

When people or pets are in immediate danger, call 911.



Partner Violence: 1-800-644-1441

Child Abuse: 1-800-922-5330

Elder Abuse: 1-800-922-5330 in a health care facility 1-800-842-0078

Animal Abuse: Easton, Linwood, and Leavenworth County 913-682-5724
Basehor 913-724-1370
Lansing 913-727-3000
Leavenworth 913-682-0268 or 682-4411 Tonganoxie 913-845-2311

When people or pets are in immediate danger, call 911.



Partner Violence: 1-800-644-1441

Child Abuse: 1-800-922-5330

Elder Abuse: 1-800-922-5330 in a health care facility 1-800-842-0078

Animal Abuse: Easton, Linwood, and Leavenworth County 913-682-5724
Basehor 913-724-1370
Lansing 913-727-3000
Leavenworth 913-682-0268 or 682-4411 Tonganoxie 913-845-2311

When people or pets are in immediate danger, call 911.



Partner Violence: 1-800-644-1441

Child Abuse: 1-800-922-5330

Elder Abuse: 1-800-922-5330 in a health care facility 1-800-842-0078

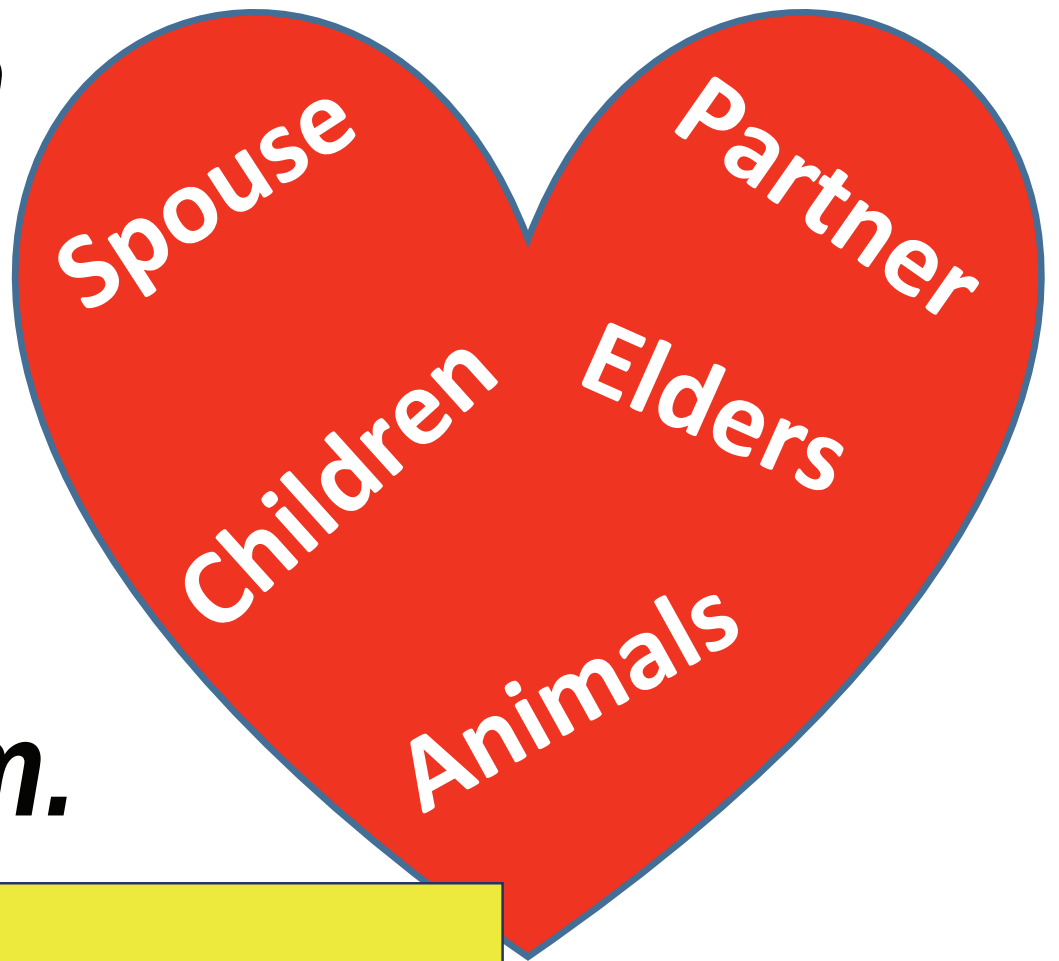
Animal Abuse: Easton, Linwood, and Leavenworth County 913-682-5724
Basehor 913-724-1370
Lansing 913-727-3000
Leavenworth 913-682-0268 or 682-4411 Tonganoxie 913-845-2311

When people or pets are in immediate danger, call 911.



REAL love doesn't hurt.

**Abusers often
hurt
more
than one victim.**



Who's next?

Neighbors?

Co-workers?

Strangers?

***Trust your eyes, your ears,
your "gut", and
your heart.***



Alliance Against



Family Violence

Report suspected abuse.

You could save a life.

To learn more about the link between interpersonal violence and animal abuse, visit <http://nationallinkcoalition.org>

Partner: 1-800-644-1441

Child or Elder: 1-800-922-5330

Animal: Easton, Linwood, and Lvn County 913-682-5724

Basehor 913-724-1370 Lansing 913-727-3000

Leavenworth 913-682-0268 or 682-4411

Tonganoxie 913-845-2311

Immediate danger, CALL 911.

The following may indicate a senior is suffering abuse:

- Bruises, pressure marks, broken bones, abrasions, burns
- Unexplained withdrawal from normal activities, a sudden change in alertness, unusual depression
- Sudden changes in financial status
- Bedsores, unattended medical needs, poor hygiene, unusual weight loss
- Belittling, threats, other uses of power and control
- Strained or tense relationships, frequent arguments between caregiver and elder

If you suspect elder abuse, neglect or exploitation,

Call the Kansas Protection Report Center

1-800-922-5330

If the suspected abuse occurred in a Nursing Home, Hospital or by a Home Health Agency, Call the Elder Abuse Hotline at

1-800-842-0078



The following may indicate an animal is abused/neglected:

- Overly tight collar (may be embedded in flesh)
- Poor body condition (emaciated, dull coat, deformity)
- Open wounds, signs of multiple healed wounds or ongoing illness/injury that isn't being treated
- Untreated skin conditions causing loss of hair, scaly skin, bumps or rashes
- Flea, tick or other parasite infestation
- Signs of inadequate grooming, such as extreme matting of fur, overgrown nails, dirty coat
- Weakness, limping, or inability to stand or walk normally
- Heavy discharge from eyes or nose
- Someone striking or otherwise physically abusing an animal
- Visible signs of confusion or extreme drowsiness
- Pets alone outside for long periods of time, including those who are tethered or kenneled
- Pets allowed to interfere with or in danger from vehicle or pedestrian traffic
- Pets without adequate, sanitary, wholesome food and water
- Pets kept outdoors in inclement weather without adequate shelter from the elements
- Pets in an area littered with feces, garbage, or objects that could harm them
- Animals housed in enclosures too small to allow them to stand, turn around and make normal movements, possibly with other animals.

If you suspect animal abuse/neglect, including animal hoarding:

In Lansing 913-727-3000 or after hours 913-682-5724

In Leavenworth 913-682-0268 or 682-4411

In Basehor 913-724-1370

In Tonganoxie 913-845-2311

In Easton, Linwood and Unincorporated Leavenworth County 913-682-5724

THEN, inform LvnCoHS@live.com so we may follow up on the report, assist as able, and encourage prosecution.

To report an unattended ill or injured animal, animal fighting, abandonment, or witnessed violent cruelty,

call 911.



The Leavenworth County Link Coalition exists to reduce violence, abuse and neglect toward people and pets in Leavenworth County.

Our goals include educating, encouraging and empowering law enforcement, prosecutors, the judiciary, elected officials, health care and social service providers, veterinary personnel, educators, clergy, and community volunteers to better address the Link® between interpersonal violence and animal abuse.

We can help make homes, people and animals safer in Leavenworth County.

To become involved or to get additional information, contact LvnCoHS@live.com or the Alliance.

Info sources:

Kansas Department of Social and Rehabilitative Services
National Coalition Against Domestic Violence
National Center on Elder Abuse
Kansas Attorney General's Office
U.S. Department of Health and Human Services
ASPCA

You CAN Help Stop the Hurt !



Recognize signs of abuse.
Ask, Report, Refer.



Child Abuse / Neglect

Domestic Partner Abuse

Elder Abuse

Animal Abuse / Neglect

Leavenworth County Link Coalition
A Cooperative Effort Led by
the Alliance Against Family Violence and
Leavenworth County Humane Society

The following may indicate a child is abused/neglected:

The Child

- Shows sudden changes in behavior or school performance
- Has not received help for a physical or medical problem brought to parent/guardian's attention
- Has learning problems or difficulty concentrating that cannot be attributed to specific physical/psychological causes
- Is always watchful (as though preparing for something bad to happen)
- Lacks adult supervision
- Is overly compliant, passive or withdrawn
- Aggressive, disruptive or destructive behavior
- Comes to school or other activities early, stays late, and does not want to go home
- Frequent school absence or tardiness

The Parent/Guardian

- Shows little concern for the child
- Denies existence of – or blames child for – child's problems in school or at home
- Asks caregivers to use harsh physical discipline if child misbehaves
- Sees the child as entirely bad, worthless or burdensome
- Demands a level of physical or academic performance child cannot achieve
- Looks primarily to child for care, attention and satisfaction of emotional needs

Parent and Child

- Rarely touch or look at each other
- Consider their relationship entirely negative
- State that they do not like each other

Signs of Physical Abuse

- Unexplained burns, bites, bruises, broken bones, black eyes
- Fading bruises or other marks noticeable after an absence from school
- Seems frightened of parents/protectors and cries when it's time to go home
- Shrinks at approach of adults
- Reports injury by parent or another caregiver
- Parent or caregiver offers conflicting, unconvincing or no explanation for child's injury
- Adult describes child as "evil" or in some other very negative way
- Parent or caregiver uses harsh physical discipline
- Adult has a history of abuse as a child

Signs of Neglect

The Child

- is frequently absent from school
- begs or steals food or money
- lacks needed medical or dental care, immunizations or glasses
- is consistently dirty or has severe body odor
- lacks appropriate clothing for the weather
- abuses alcohol or other drugs
- states no one is home to provide care

The Parent / Guardian

- appears indifferent to child
- seems apathetic or depressed
- behaves irrationally or in a bizarre manner
- is abusing alcohol or other drugs

Signs of Sexual Abuse

The Child

- has difficulty walking or sitting
- suddenly refuses to change for gym or to participate in physical activities
- reports nightmares or bedwetting
- experiences sudden change in appetite
- demonstrates bizarre, sophisticated, or unusual sexual knowledge (in vocabulary, writing, drawing or behavior)
- becomes pregnant or contracts a venereal disease (particularly if under age 14)
- runs away
- reports sexual abuse by a parent or other adult

The Parent / Guardian

- is unduly protective of the child, or severely limits child's contact with other children, especially those of the opposite sex
- is secretive and isolated
- is jealous/controlling with family members

Signs of Emotional Maltreatment

The Child

- Shows extremes in behavior (overly compliant or demanding, extreme passivity or aggression)
- Is inappropriately adult or inappropriately infantile
- Is delayed in physical or emotional development
- Has attempted suicide
- Reports lack of attachment to parent

The Parent/Guardian

- Constantly blames, belittles or berates child
- Appears unconcerned about the child; refuses to consider offers of help for child's difficulties
- Overtly rejects child

To report suspected child abuse / neglect-----

***Call the Kansas Protection Report Center
(Department of Social and Rehabilitative Services)
1-800-922-5330 (24/7)***

If you believe a child is in immediate danger, or has serious injury, CALL 911.

To learn more visit

<http://www.srs.ks.gov/agency/cfs/Documents/Child%20Abuse%20Reporting%20Guide.pdf>



The following may indicate an adult is suffering domestic violence:

- Repeated injuries, with unclear, hesitant or inconsistent explanations for them
- Personality/behavior change, to include withdrawal, fearfulness, loss of former confidence
- Absence from work / absence from previous social activities
- Avoiding family/friends
- Avoidance of any conflict

Those experiencing domestic violence may not be willing to talk about it.

Express concern.

Listen.

Ask if they are safe at home.

Ask if they want help.

Emphasize that no one deserves to be abused.

Emphasize that the abused is NOT responsible for the abuse, the ABUSER is.

Make resource information available.

Keep confidentiality.

Alliance Against Family Violence

24-Hour Hotline

800-644-1441 or 913-682-9131

**For those in immediate danger,
Call 911**